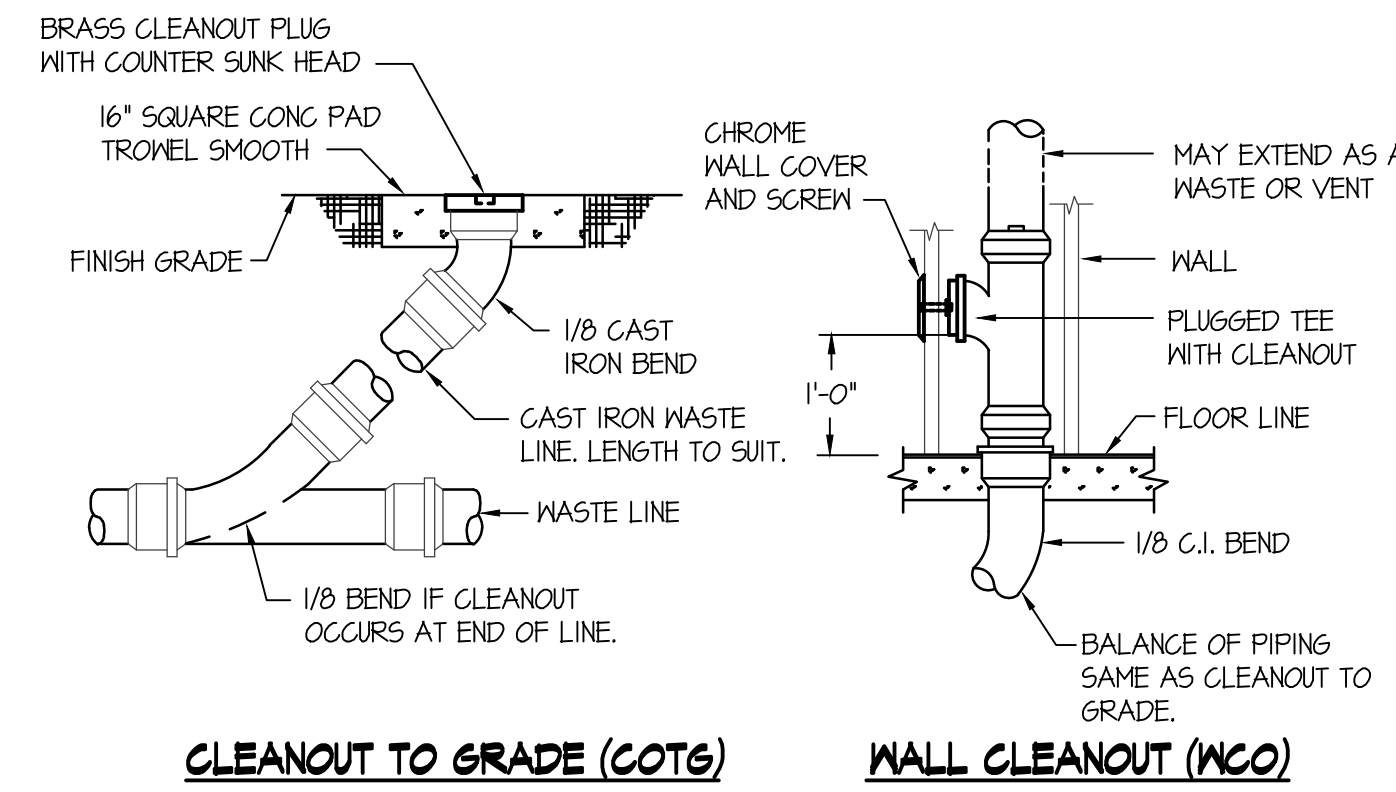
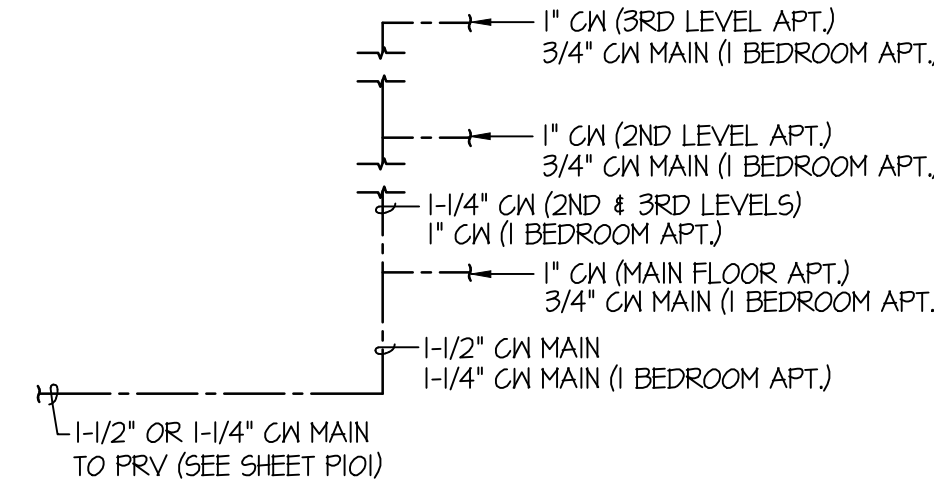


- NOTES:**
- 1 - ALL WATER PIPING INSTALLED UNDERFLOOR SHALL BE TYPE "K" COPPER
 - 2 - WATER PIPE INSULATION ON UNDERFLOOR PIPING SHALL BE ARMAFLEX 3/4" THICK RUBBER PIPE INSULATION. TAPE INSULATION AT ALL SEAMS.
 - 3 - MINIMUM PIPE SIZE UNDERFLOOR SHALL BE 3/4"
 - 4 - SAND FILL AROUND PIPING SHALL BE A MINIMUM OF 4" THICK. MATERIAL SHALL BE HAND TAMPED, RODDED OR LIGHTLY COMPACTED DURING INSTALLATION. CARE SHOULD BE TAKEN NOT TO DEFORM OR OTHERWISE DAMAGE PIPING OR INSULATION.

UNDER SLAB PIPE INSTALLATION DETAIL
NO SCALE

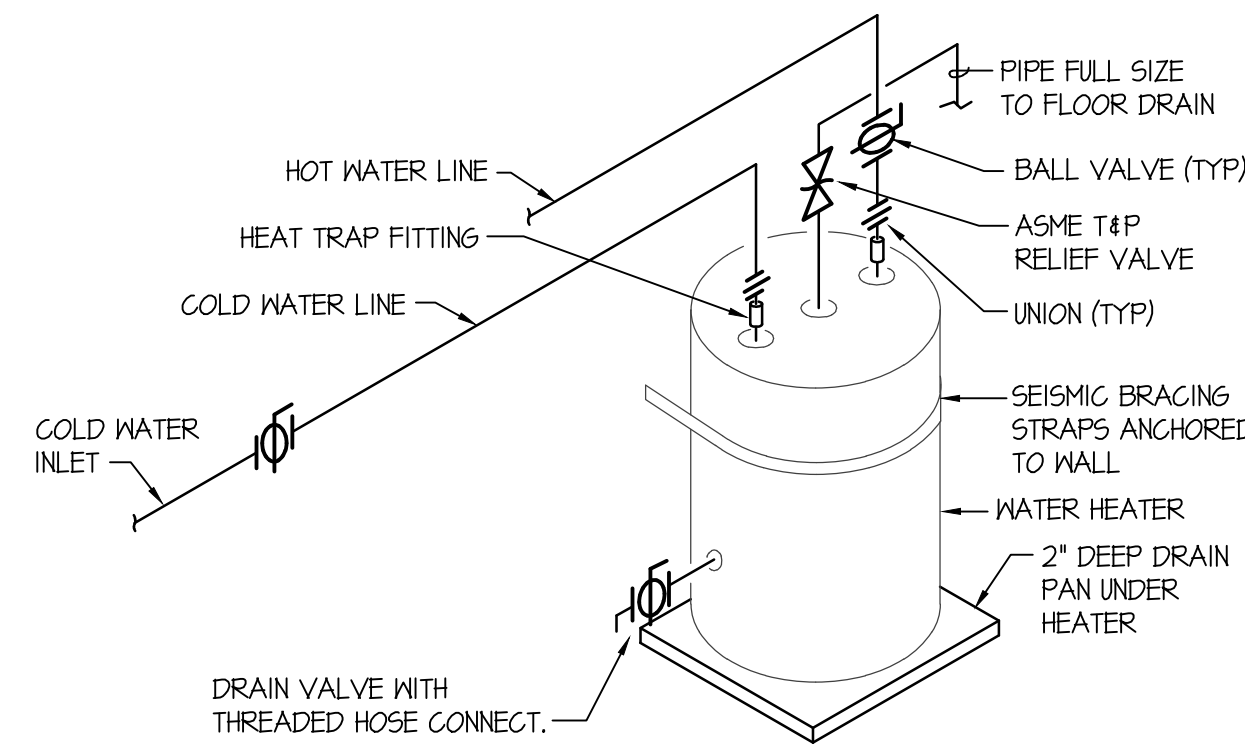


CLEAN OUT DETAILS
NO SCALE

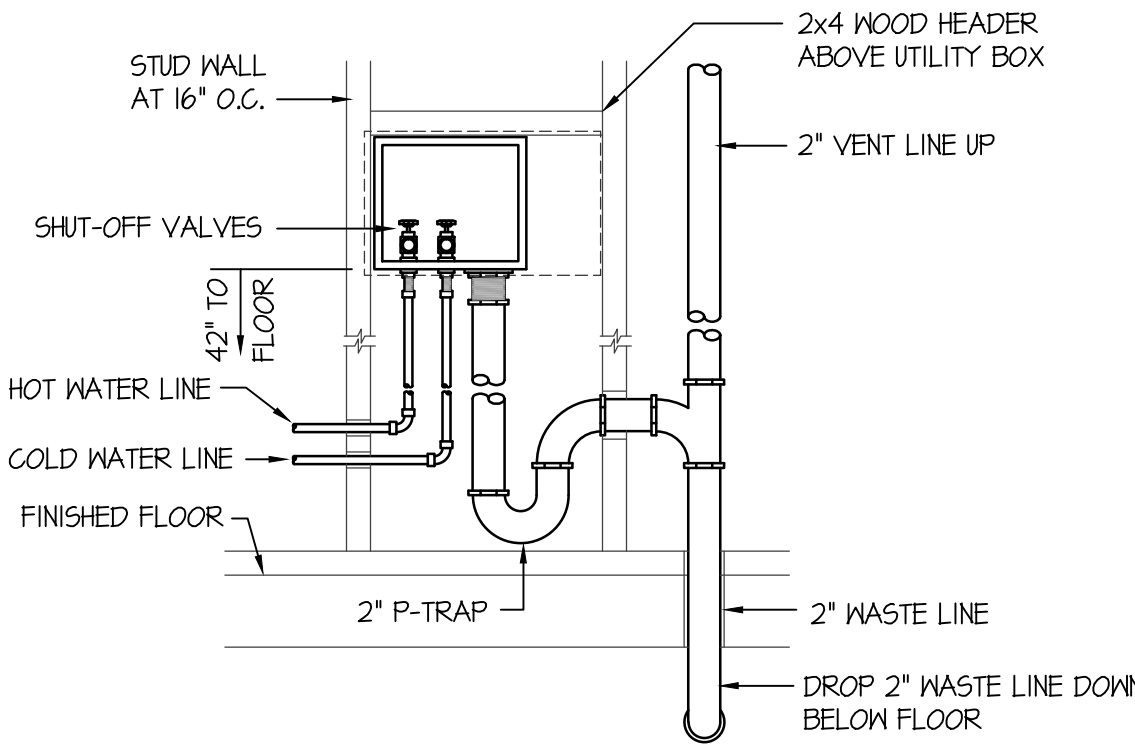


TYPICAL CW RISER IN MECH. ROOMS
NO SCALE

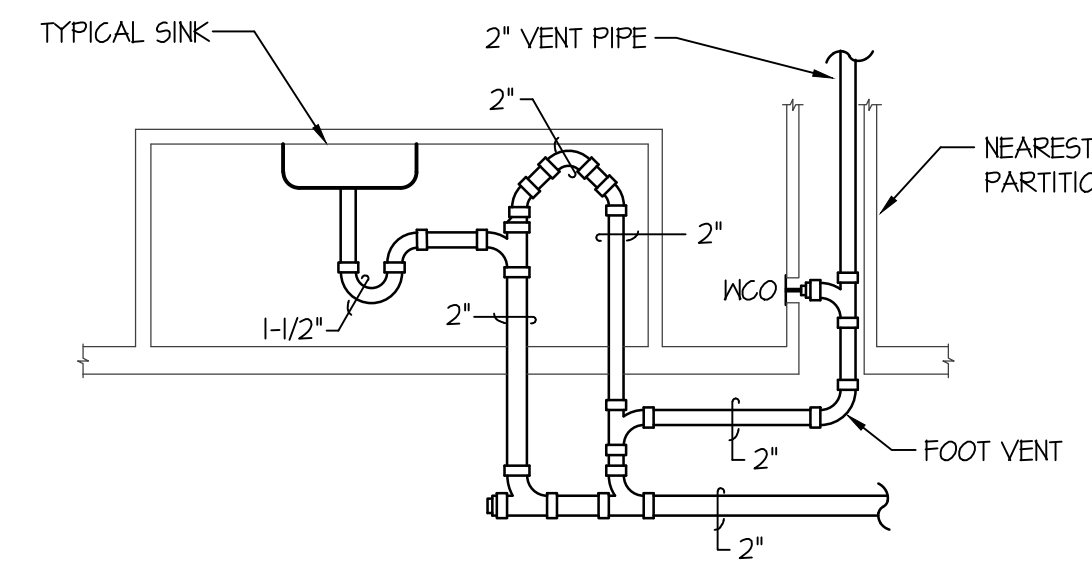
SYM.	DESCRIPTION	PIPE SIZE					REMARKS
		TRAP	WASTE	VENT	C/W	H/W	
(WC-1)	WATER CLOSET	INT.	3"	2"	1/2"	-	FLUSH TANK (RESIDENTIAL)
(L-1)	LAVATORY	1-1/2"	1-1/2"	1-1/2"	1/2"	1/2"	COUNTERTOP MOUNT
(T-1)	TUB / SHOWER	1-1/2"	1-1/2"	1-1/2"	1/2"	1/2"	RIGHT OR LEFT HAND AS PER FLOOR PLAN
(KS-1)	KITCHEN SINK	1-1/2"	1-1/2"	1-1/2"	1/2"	1/2"	S.S. COUNTERTOP SINGLE COMPARTMENT WITH DISPOSER
(KS-2)	KITCHEN SINK	1-1/2"	1-1/2"	1-1/2"	1/2"	1/2"	S.S. COUNTERTOP DOUBLE COMPARTMENT WITH DISPOSER
(DW-1)	DISHWASHER	-	3/4"	-	-	1/2"	UNDER COUNTER - CONNECT TO ADJACENT SINK
(FD-1)	FLOOR DRAIN	2"	2"	2"	-	-	WITH DEEP SEAL P-TRAP
(FS-1)	FLOOR SINK	4"	4"	2"	-	-	WITH DEEP SEAL P-TRAP AND 3/4" GRATE
(WH-1)	WATER HEATER	-	-	-	3/4"	3/4"	50 GALLON ELEC. WATER HEATER WITH T&P VALVE & EXP. TANK-4500 WATT ELEMENTS NON-SIMULTANEOUS AT 240/60/1 POWER
(WB-1)	WASHER BOX	2"	2"	2"	1/2"	1/2"	POLY WASHER BOX WITH 1/2" HN AND CW STOP VALVES 2" STANDPIPE WITH P-TRAP (SEE DETAIL THIS SHEET)
(HB-1)	EXTERIOR HOSE BIBB	-	-	-	3/4"	-	FREEZEPROOF EXTERIOR HOSE BIBB WITH REMOVABLE KEY. LENGTH TO SUIT WALL THICKNESS



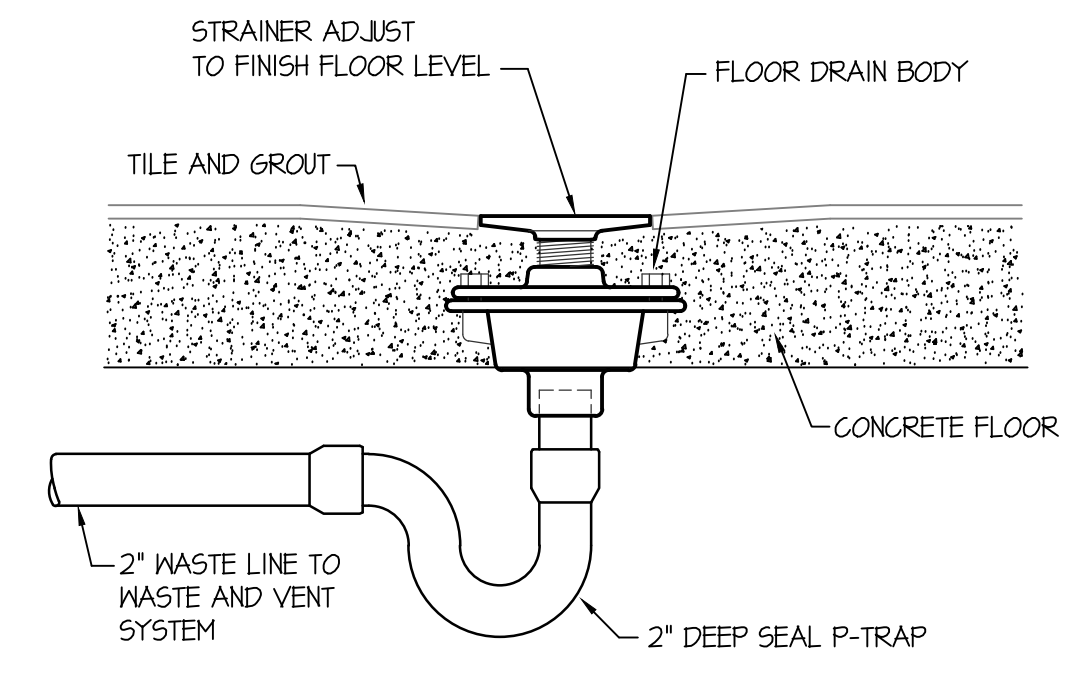
WATER HEATER PIPING DIAGRAM
NO SCALE



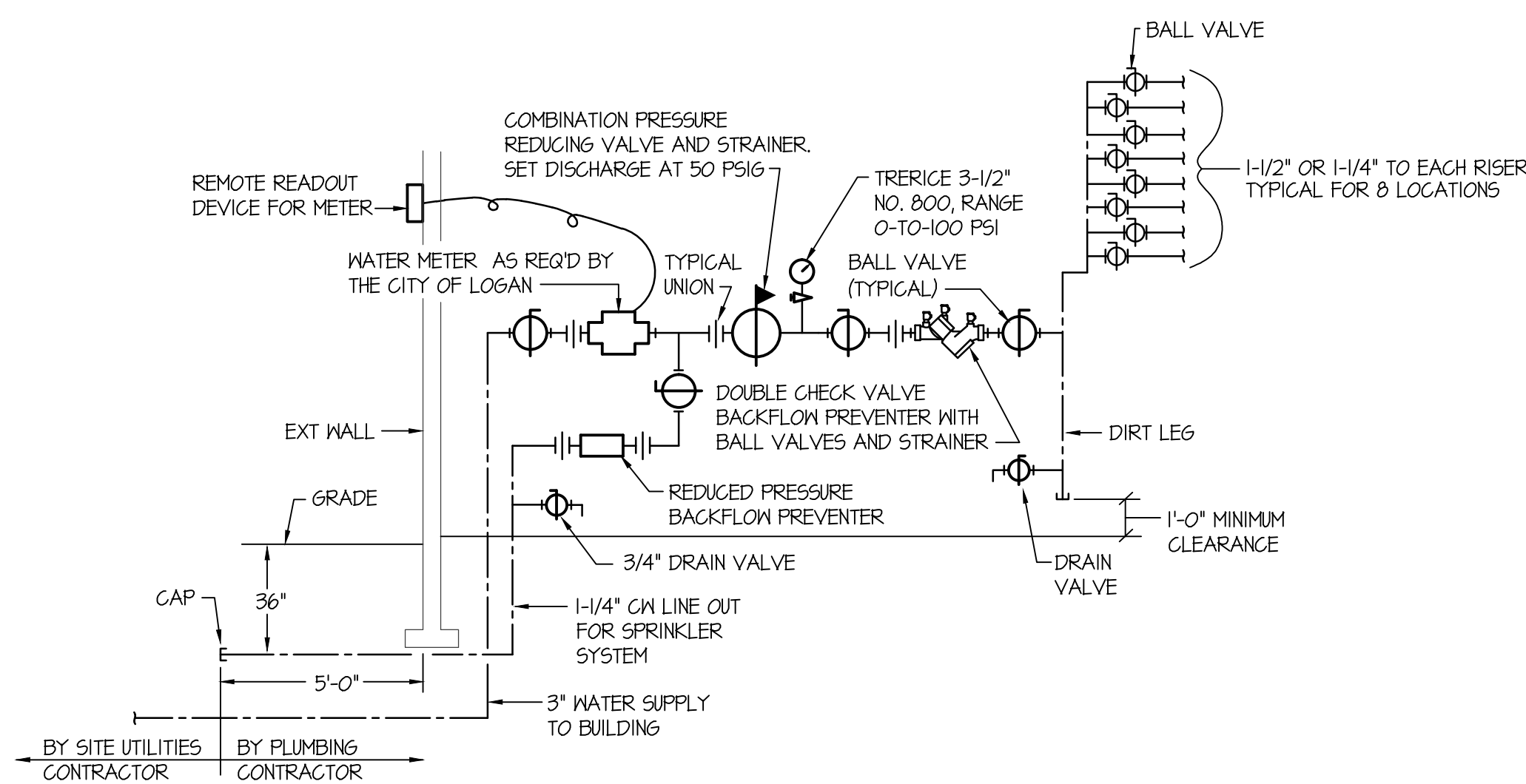
WASHER BOX PIPING DETAIL
NO SCALE



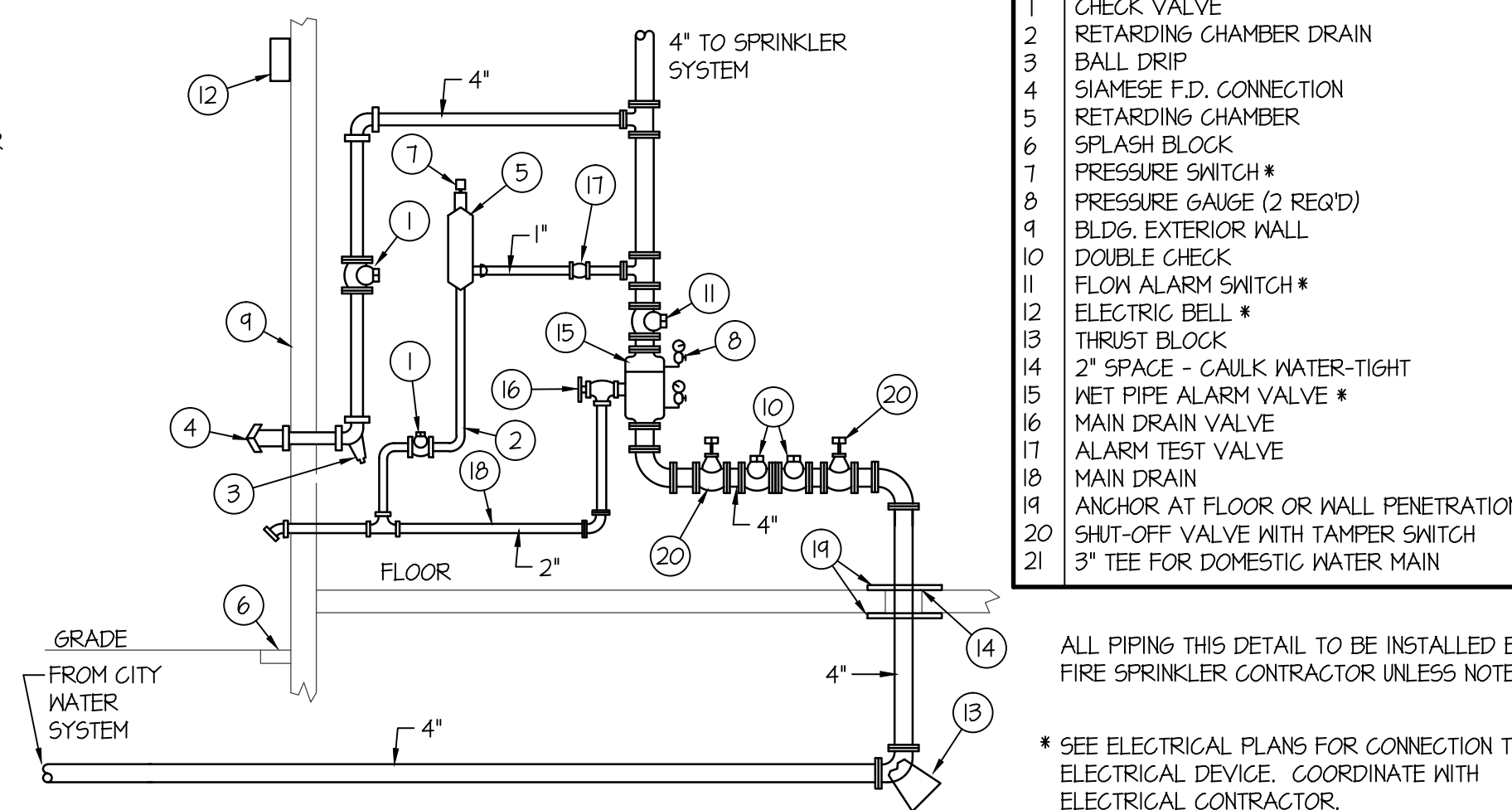
ISLAND SINK VENTING DETAIL
NO SCALE



FLOOR DRAIN IN CONCRETE FLOOR
NO SCALE

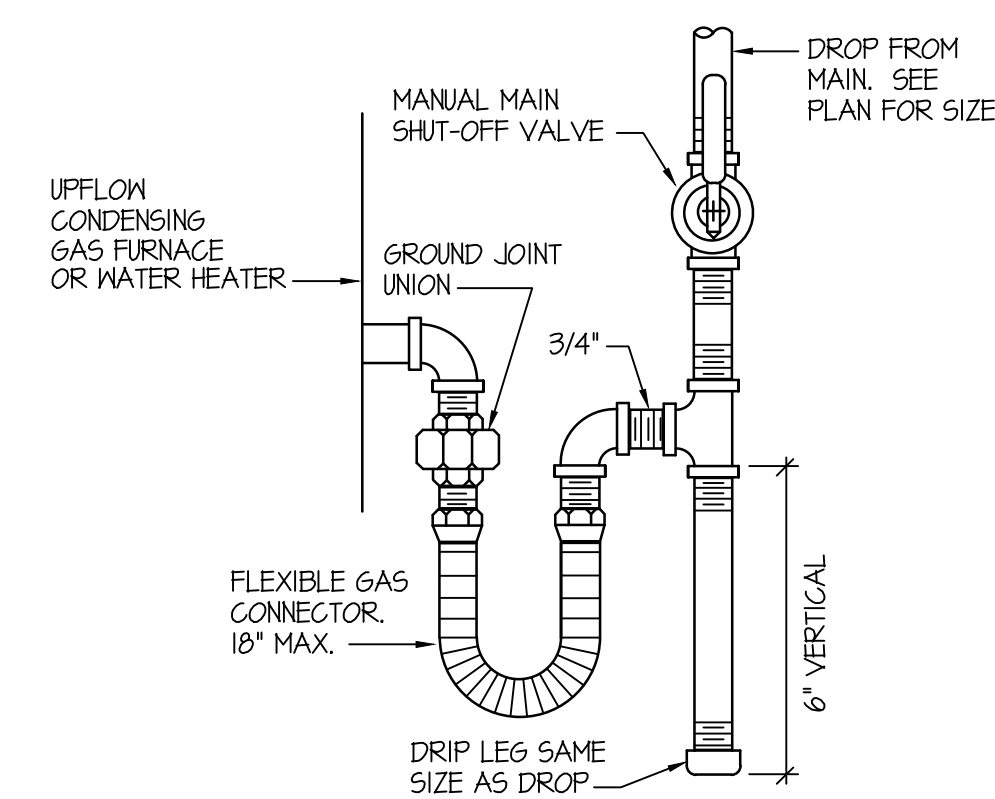


WATER PRESSURE REDUCING STATION DETAIL
NO SCALE



- | ITEM | DESCRIPTION |
|------|-------------------------------------|
| 1 | CHECK VALVE |
| 2 | RETARDING CHAMBER DRAIN |
| 3 | BALL DRIP |
| 4 | SIAMESE F.D. CONNECTION |
| 5 | RETARDING CHAMBER |
| 6 | SPLASH BLOCK |
| 7 | PRESSURE SWITCH * |
| 8 | PRESSURE GAUGE (2 REQ'D) |
| 9 | BLDG. EXTERIOR WALL |
| 10 | DOUBLE CHECK |
| 11 | FLOW ALARM SWITCH * |
| 12 | ELECTRIC BELL * |
| 13 | THRUST BLOCK |
| 14 | 2" SPACE - GULK WATER-TIGHT |
| 15 | WET PIPE ALARM VALVE * |
| 16 | MAIN DRAIN VALVE |
| 17 | ALARM TEST VALVE |
| 18 | MAIN DRAIN |
| 19 | ANCHOR AT FLOOR OR WALL PENETRATION |
| 20 | SHUT-OFF VALVE WITH TAMPER SWITCH |
| 21 | 3" TEE FOR DOMESTIC WATER MAIN |

ALL PIPING THIS DETAIL TO BE INSTALLED BY FIRE SPRINKLER CONTRACTOR UNLESS NOTED.
* SEE ELECTRICAL PLANS FOR CONNECTION TO ELECTRICAL DEVICE. COORDINATE WITH ELECTRICAL CONTRACTOR.



GAS LINE CONNECTION DETAIL
NO SCALE



Engineered Systems Associates
Mechanical Engineers

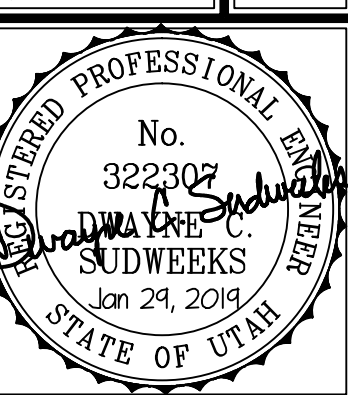
Dwayne Sudweeks
1355 East Center - Pocatello, Idaho 83201
Phone: (208) 233-0501 Fax: (208) 233-0529 email: es@engsystems.com

STRATA APARTMENTS

LOGAN, UTAH

PLUMBING DETAILS & SCHEDULES

PROJECT:



DRWN. BY: SR	CHK. BY: DCS
JOB NO: 18043	DATE: DEC. 2018

SHEET: **P300**
OF: FOUR